



FOUNDRY

BREWERY CO.

This Oast Haus &
Rogue Cooper Design

This Oast Haus

Typefaces used: Amador and Herb (manipulated)
Secondary Typeface: Big Caslon Medium

The typefaces chosen have two goals.

One: to invoke the 16th-century tradition

Two: to use the iconic architecture of the oast house itself in the design by manipulating the A. The bird icon adds to this iconography, tying the shape with a roof that a bird might sit on.

The color palette of green and black was chosen to call back to the purpose of the oast house of drying hops. Black serves as a contrast to the bright green as well as drives home the calligraphy-like font.

The old European countryside feeling is solidified further by the scenery.



008e37

8cc63f



000000

ffffff

thisTM
HOAST
HAUS



www.foundrybrewingco.com

755 Walker Road
Great Falls, VA 22066

Menacing hops character and dangerously smooth flavor. Sweetness tempered by the ABV and hoppy bitterness, balanced enough to thoroughly enjoy its flavor depth.



GOVERNMENT WARNING:
(1) According to the Surgeon General, women should not drink alcoholic beverages during pregnancy because of the risk of birth defects. (2) Consumption of alcoholic beverages impairs your ability to drive a car or operate machinery, and may cause health problems. Please drink responsibly!



thisTM oast haus

Imperial IPA

Aroma of sweet cherries, orange peel, and Grand Mariner liqueur

16 oz. | 8.3% Alc./Vol.

the oast with the most



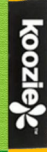
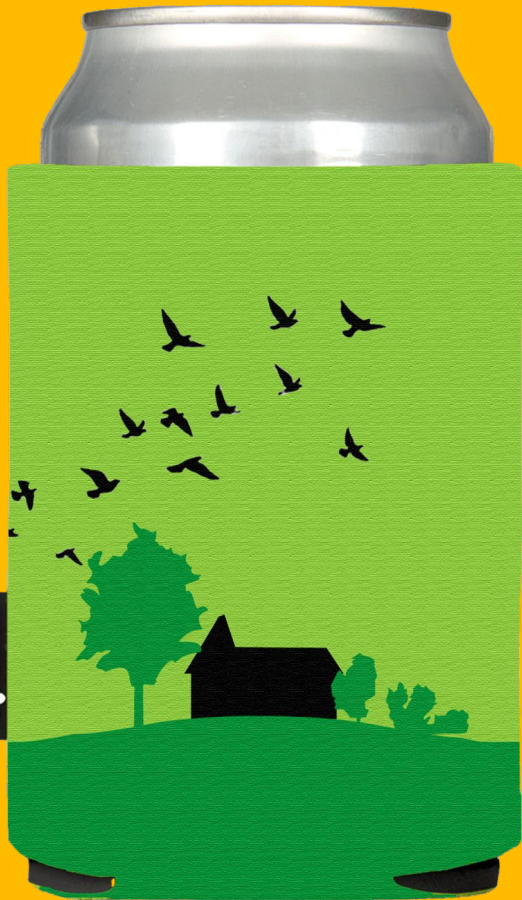
thisTM oast haus

Imperial IPA

Aroma of sweet cherries, orange peel, and Grand Mariner Liqueur

16 oz. | 8.3% Alc./Vol.











Rogue Cooper

Typefaces used: Battery Park

Secondary Typeface: Big Caslon Medium

The goal for this logo and the overall feel of the Rogue Cooper designs is to feel like you are looking at a barrel constructed by a cooper. The rugged font ties the rough nature of a rogue. The distressed nature of the logo makes it look like a stamp a cooper could use on his barrels for marking. This combines with the designs of the beer can label which looks like a barrel and the sticker/coaster design that looks like the top of a barrel.

I have also created a mascot of a cooper who matches the gruff working man that the name “rogue cooper” invokes.





www.foundrybrewingco.com

755 Walker Road
Great Falls, VA 22066

Rogue Cooper Bourbon Porter was brewed in November of 2018 and was carefully aged for months in Maker's Mark Bourbon casks from Kentucky.



GOVERNMENT WARNING:
(1) According to the Surgeon General, women should not drink alcoholic beverages during pregnancy because of the risk of birth defects. (2) Consumption of alcoholic beverages impairs your ability to drive a car or operate machinery, and may cause health problems. Please drink responsibly!



Bourbon Porter

Full malty palate.
Aroma of dried cherry, chocolate,
and a subtle hint of molasses

16 oz. 19% Alc./Vol.



FLAVOR BY THE BARREL

 **ROGUE**™
COOPER

koozie

koozie











FOUNDRY

BREWERY CO.

755 Walker Road
Great Falls, VA 22066

Try Our New Favorites



This Oast Haus

Aroma of sweet cherries, orange peel & Grand Marinier Liqueur

Rogue Cooper

Full malty palate. Aroma of dried cherry, chocolate, & subtle hint of molasses



schedule a tour at
www.foundrybrewingco.com





Thank You

Mackenzie Hoffman

